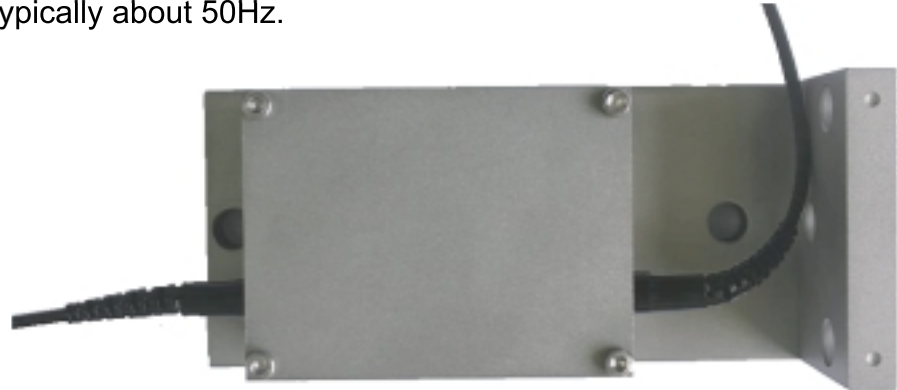


FBG Accelerometer (P/N: ALAL01)

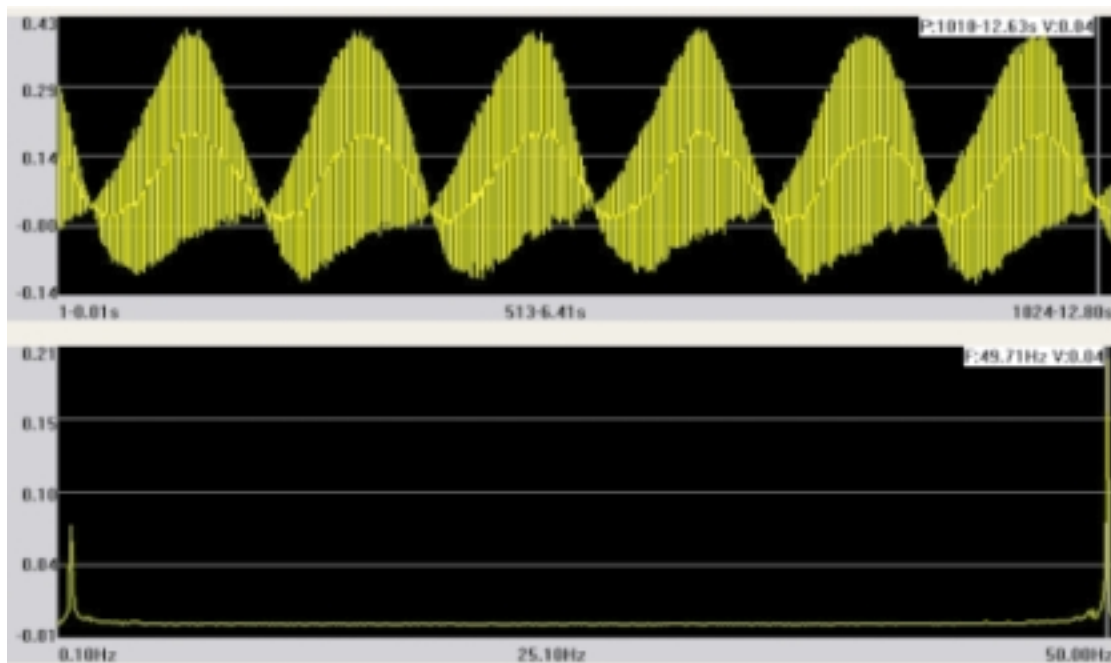
Alxenses's FBG accelerometer ALAL01 is designed for buildings and civil infrastructures. The accelerometer has a high sensitivity in low frequency range to cover the most important frequency components of the structural response, typically about 50Hz.

Features

- Robust and reliability
- High sensitivity
- Long lifetime



Test Result



SPECIFICATIONS

Accelerometer ALAL01

Parameters	Values	Units
Center Wavelength	1510~1590	nm
Range	0~3	ms ⁻²
Accuracy	1% F.S.	--
Sensitivity	250~500	pm/ms ⁻²
Operating Temperature	-30 ~ +80	°C
Dimension	72 x 54 x 37.5	mm
Connector	FC/APC	--
Pigtail	3mm armored cable	--